

# Market Mood





08<sup>th</sup> April 2025

# Market Mood



<b>LTP</b>	22161
<b>R1</b>	22388
<b>R2</b>	22709
<b>S1</b>	22000
<b>S2</b>	21500

- The NIFTY index opened with a sharp gap down of around 1150 points (-5%) due to negative global cues and tariff-related updates. However, buyers quickly stepped in, helping the index recover and close higher at 22,161, down 3.24% for the day.
- On the hourly chart, NIFTY managed to close above its 20 EMA (22,092), indicating signs of stability in the market. From a momentum perspective, the RSI stands at 56.16, suggesting strength and potential for upward movement.
- For today's session, the outlook remains sideways to positive as long as NIFTY holds above the 22,000 mark. Key resistance levels to watch are 22,388 and 22,709, while support is seen at 21,758 and then 21,500.



<b>LTP</b>	49860.10
<b>R1</b>	50000
<b>R2</b>	50400
<b>S1</b>	49156
<b>S2</b>	49000

- The BANKNIFTY index opened sharply lower at 49,336, posting a gap down of over 2,170 points (>4%) due to global market concerns and tariff-related updates. However, buyers stepped in and drove a recovery, with the index closing at 49,860.10, down 3.19% for the day.
- On the hourly chart, BANKNIFTY attempted to break above its 20 EMA but couldn't sustain the move. Despite that, the index reflects positive momentum, as evident from the strong buying interest that lifted it off the lows.
- For today's session, the outlook remains sideways to positive as long as BANKNIFTY holds above the 49,000 mark. Key resistance levels are seen at 50,000 and 50,400, while immediate support lies at 49,156, followed by 49,000.

## Global Market:

	<b>Dow Jones Futures</b> <small>CFD</small>	38,688.28	722.68	1.90
08 Apr, 2025   08:56 IST				
	<b>S&amp;P 500</b> <small>CFD</small>	5,062.25	-11.83	-0.23
08 Apr, 2025   01:29 IST				
	<b>Nasdaq</b> <small>CFD</small>	15,603.26	15.48	0.10
08 Apr, 2025   01:29 IST				
	<b>FTSE</b>	7,702.08	-352.90	-4.58
07 Apr, 2025   21:25 IST				
	<b>CAC</b>	6,927.12	-347.83	-5.02
07 Apr, 2025   21:20 IST				
	<b>DAX</b>	19,789.62	-852.10	-4.31
07 Apr, 2025   22:36 IST				

## Sentiment Gauge



Sideways to Positive

## FII - DII Activities:

Activity	FII (Cr)	DII (Cr)
Cash	-9040.01	12122.45

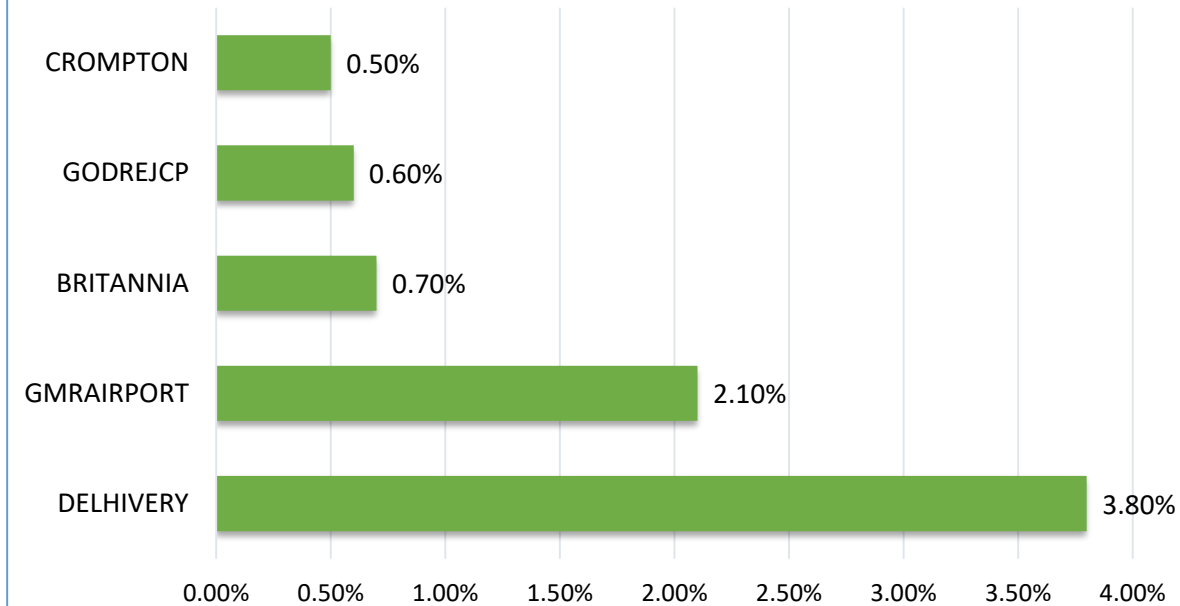
## Adv/Dec

Advance	Decline	A/D Ratio
8	213	0.038

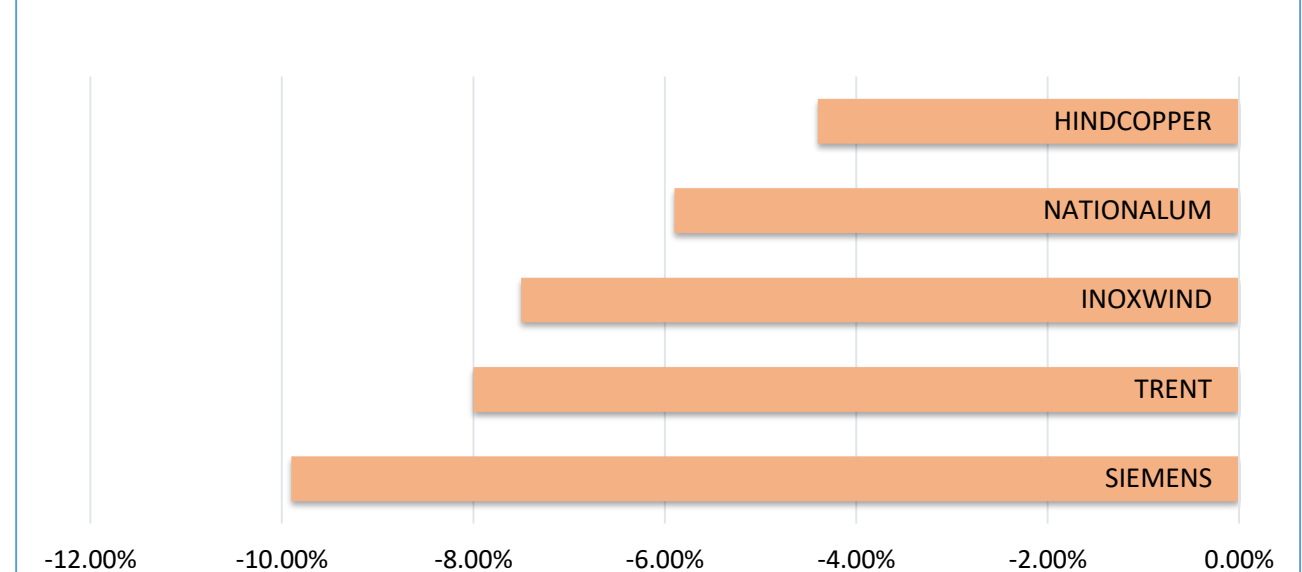
08<sup>th</sup> April 2025

# Market Mood

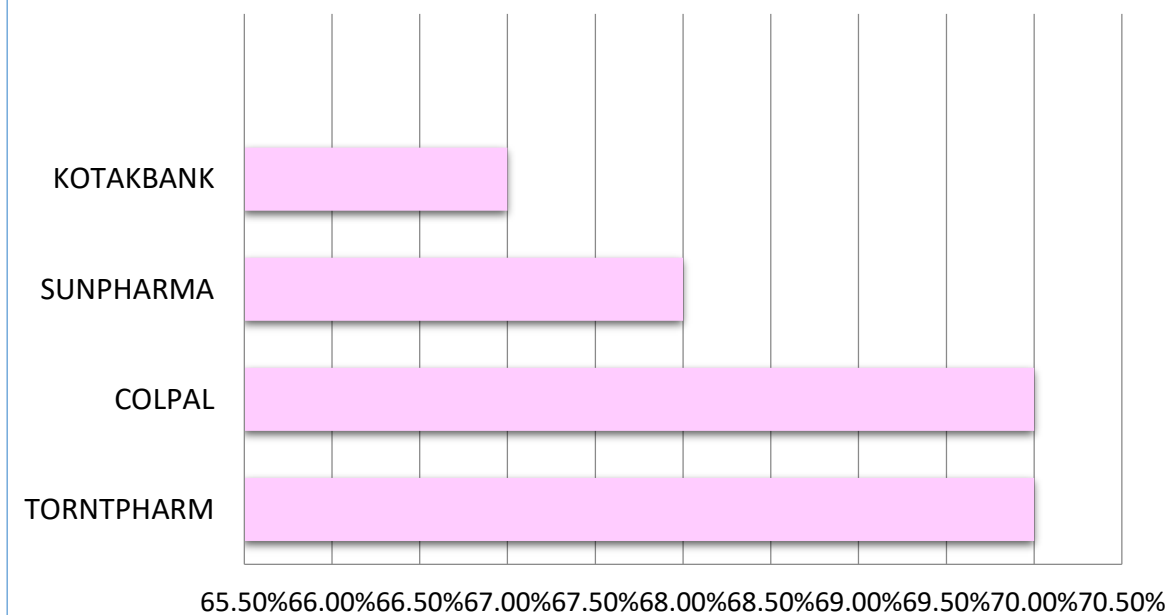
## PRICE UP



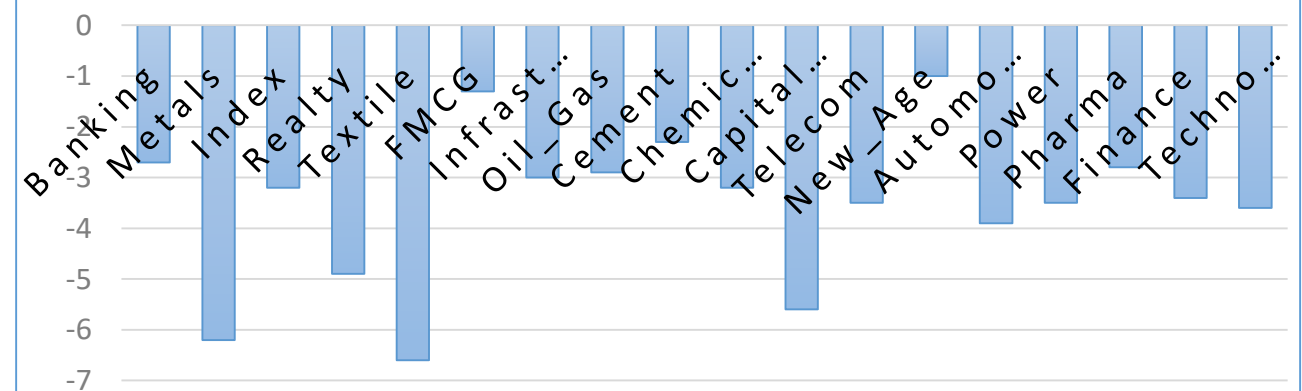
## PRICE DOWN



## DELIVERY HEAVY



## SECTOR



08<sup>th</sup> April 2025

# Market Mood



## CALL OF THE DAY



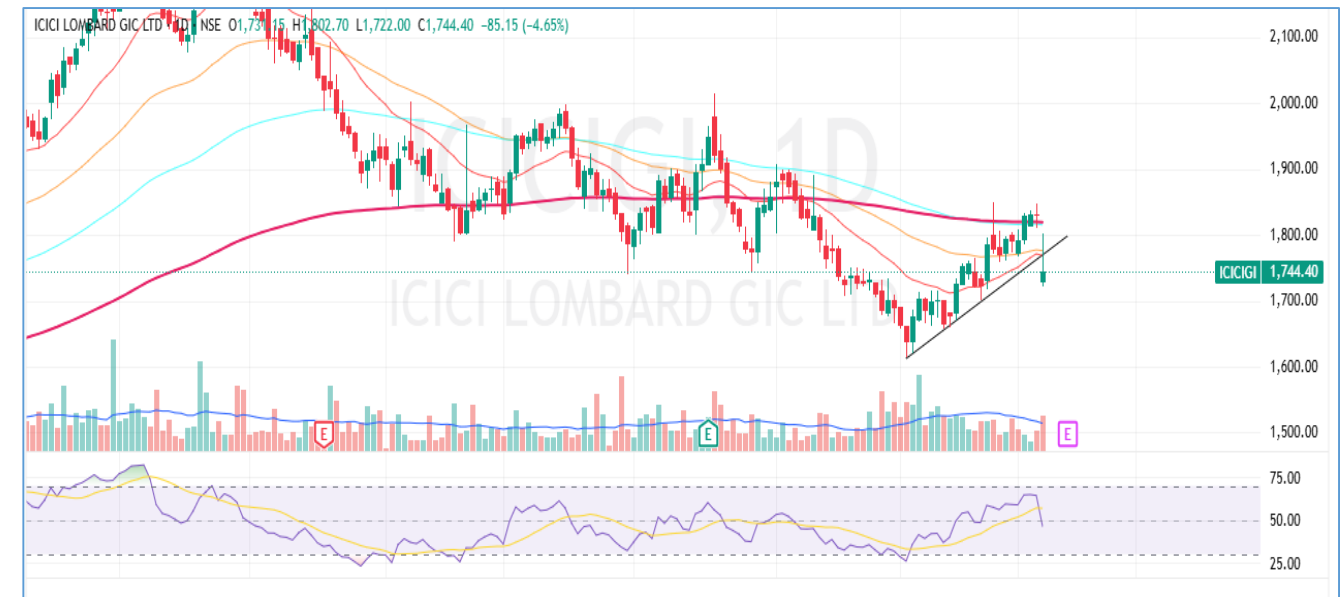
HINDPETRO (Intraday pick)

Sell below: 345 SL : 350 TGT : 335/334

Hindustan Petroleum (Hindpetro) has come under notable selling pressure over the last two trading sessions, supported by strong volumes. The stock has broken below a 9-day consolidation range, indicating rejection from resistance levels and the emergence of fresh bearish momentum.

From a technical standpoint, the stock has closed below its 100 and 200-day EMAs, reinforcing the bearish trend. Additionally, the Relative Strength Index (RSI) is at 55.35 and slipping lower after crossing below its moving average, suggesting weakening momentum and a possible continuation of downside pressure.

## CALL OF THE DAY



ICICIGI (Intraday pick)

Sell below : 1724 SL : 1749 TGT : 1673/1671

ICICI Lombard has broken below a key rising trend line on the daily timeframe, accompanied by a high-wick candle and strong volume—indicating heightened selling pressure. The price action suggests rejection at higher levels and potential for further downside. Technically, the stock is trading below its 20, 50, 100, and 200-day EMAs, underscoring a prevailing bearish trend. The Relative Strength Index (RSI) is at 46.33 and has crossed below its moving average, signaling weakening momentum and supporting the bearish outlook.

08<sup>th</sup> April 2025

# Market Mood



## Nifty 50 Snapshot

Script	LTP	CHNG	%CHNG	R1	R2	S1	S2
NIFTY 50	22,161.60	-742.85	-3.24	22,982	23802.54	21,341.13	20,520.66
HINDUNILVR	2,250.00	5.45	0.24	2,340	2429.748	2,160.13	2,070.25
ZOMATO	211	0.47	0.22	224	237.6597	197.67	184.34
APOLLOHOSP	6,714.50	-0.05	-	6,887	7059.835	6,541.83	6,369.16
NTPC	349.75	-0.65	-0.19	371	393.1727	328.04	306.33
NESTLEIND	2,255.00	-7.15	-0.32	2,341	2427.872	2,168.56	2,082.13
TCS	3,285.00	-14.4	-0.44	3,475	3665.459	3,094.77	2,904.54
INDUSINDBK	678.5	-3.5	-0.51	716	753.6532	640.92	603.35
ASIANPAINT	2,344.00	-12.05	-0.51	2,487	2629.843	2,201.08	2,058.16
ITC	406.75	-2.95	-0.72	423	439.285	390.48	374.21
TITAN	3,046.10	-30.1	-0.98	3,166	3286.063	2,926.12	2,806.14
POWERGRID	290.65	-3.25	-1.11	300	309.6827	281.13	271.62
MARUTI	11,352.95	-129.05	-1.12	11,656	11959.78	11,049.53	10,746.12
WIPRO	243.15	-3.15	-1.28	257	270.5063	229.47	215.79
BAJFINANCE	8,590.10	-128.75	-1.48	8,891	9191.364	8,289.47	7,988.84
CIPLA	1,393.40	-21.85	-1.54	1,457	1520.643	1,329.78	1,266.16
DRREDDY	1,092.30	-17.65	-1.59	1,166	1239.116	1,018.89	945.48
COALINDIA	378.9	-6.15	-1.6	401	422.5485	357.08	335.25
ULTRACEMCO	11,288.90	-209.75	-1.82	11,591	11893.84	10,986.43	10,683.96
SUNPHARMA	1,677.10	-32.25	-1.89	1,748	1818.268	1,606.52	1,535.93
TECHM	1,292.95	-28	-2.12	1,368	1442.251	1,218.30	1,143.65
BEL	274	-6	-2.14	292	310.4088	255.80	237.59
SBIN	749	-18.45	-2.4	777	804.5705	721.21	693.43
ONGC	220.35	-5.66	-2.5	235	250.5419	205.25	190.16
ADANIPTS	1,119.00	-29.35	-2.56	1,197	1275.859	1,040.57	962.14



08<sup>th</sup> April 2025

# Market Mood



Script	LTP	CHNG	%CHNG	R1	R2	S1	S2
RELIANCE	1,171.25	-33.45	-2.78	1,232	1292.044	1,110.85	1,050.46
BHARTIARTL	1,693.00	-50.45	-2.89	1,759	1825.526	1,626.74	1,560.47
SBILIFE	1,468.00	-44.6	-2.95	1,523	1577.693	1,413.15	1,358.31
ICICIBANK	1,294.10	-41.2	-3.09	1,342	1389.175	1,246.56	1,199.03
HCLTECH	1,377.95	-44.15	-3.1	1,455	1531.672	1,301.09	1,224.23
HDFCBANK	1,760.05	-57.25	-3.15	1,810	1859.775	1,710.19	1,660.32
HDFCLIFE	667.25	-21.8	-3.16	692	717.2038	642.27	617.30
INFY	1,404.90	-46.75	-3.22	1,499	1593.96	1,310.37	1,215.84
EICHERMOT	5,078.40	-169.5	-3.23	5,265	5451.371	4,891.91	4,705.43
BAJAJFINSV	1,849.70	-62.6	-3.27	1,915	1980.407	1,784.35	1,718.99
JIOFIN	214.85	-7.47	-3.36	229	243.2527	200.65	186.45
M&M	2,508.00	-88.55	-3.41	2,633	2758.832	2,382.58	2,257.17
AXISBANK	1,052.00	-39.3	-3.6	1,095	1137.066	1,009.47	966.93
HEROMOTOCO	3,526.05	-133.15	-3.64	3,723	3920.883	3,328.63	3,131.22
TATACONSUM	1,048.00	-39.85	-3.66	1,104	1159.159	992.42	936.84
GRASIM	2,511.60	-105.3	-4.02	2,605	2698.961	2,417.92	2,324.24
KOTAKBANK	2,044.00	-87.95	-4.13	2,135	2225.146	1,953.43	1,862.85
BAJAJ-AUTO	7,322.05	-363.05	-4.72	7,692	8062.046	6,952.05	6,582.05
ADANIENT	2,222.90	-111.75	-4.79	2,357	2491.182	2,088.76	1,954.62
SHRIRAMFIN	619	-34.6	-5.29	664	709.3022	573.85	528.70
LT	3,087.00	-173.15	-5.31	3,273	3459.177	2,900.91	2,714.82
TATAMOTORS	581.1	-32.75	-5.34	631	680.5012	531.40	481.70
HINDALCO	564.45	-35.5	-5.92	599	633.0207	530.16	495.88
TATASTEEL	130.2	-10.19	-7.26	140	149.9288	120.34	110.47
JSWSTEEL	930	-75.75	-7.53	1,002	1074.784	857.61	785.22
TRENT	4,745.05	-817.8	-14.7	5,403	6061.871	4,086.64	3,428.23
TRENT	5,340.00	-205.1	-6.44				

**HARSHITA DARAK**  
**Technical Research Analyst**

Disclosure: M/s. Bonanza Portfolio Ltd here by declares that views expressed in this report accurately reflect view point with subject to companies/securities. M/s. Bonanza Portfolio Ltd has taken reasonable care to achieve and maintain independence and objectivity in making any recommendations. The Analysts engaged in preparation of this Report or his/her relative: - (a) do not have any financial interests in the subject company mentioned in this Report; (b) do not own 1% or more of the equity securities of the subject company mentioned in the report as of the last day of the month preceding the publication of the research report; (c) do not have any material conflict of interest at the time of publication of the Report. The Analysts engaged in preparation of this Report:- (a) have not received any compensation from the subject company in the past twelve months; (b) have not managed or co-managed public offering of securities for the subject company in the past twelve months; (c) have not received any compensation for investment banking or merchant banking or brokerage services from the subject company in the past twelve months; (d) have not received any compensation for products or services other than investment banking or merchant banking or brokerage services from the subject company in the past twelve months; (e) has not received any compensation or other benefits from the subject company or third party in connection with the Report; (f) has not served as an officer, director or employee of the subject company; (g) is not engaged in market making activity for the subject company.

M/s. Bonanza Portfolio Ltd is a registered Research Analyst under the regulation of SEBI, the year 2014. The Regn No. INH100001666 and research analyst engaged in preparing reports is qualified as per the regulation's provision.

Disclaimer: This research report has been published by M/s. Bonanza portfolio Ltd and is meant solely for use by the recipient and is not for circulation. This document is for information purposes only and information / opinions / views are not meant to serve as a professional investment guide for the readers. Reasonable care has been taken to ensure that information given at the time believed to be fair and correct and opinions based thereupon are reasonable, due to the nature of research it cannot be warranted or represented that it is accurate or complete and it should not be relied upon as such. If this report is inadvertently send or has reached to any individual, same may be ignored and brought to the attention of the sender. Preparation of this research report does not constitute a personal recommendation or take into account the particular investment objectives, financial situations, or needs of individual clients. Past performance is not a guide for future performance. This Report has been prepared on the basis of publicly available information, internally developed data and other sources believed by Bonanza portfolio Ltd to be reliable. This report should not be taken as the only base for any market transaction; however this data is representation of one of the support document among other market risk criterion. The market participant can have an idea of risk involved to use this information as the only source for any market related activity.

The distribution of this report in definite jurisdictions may be restricted by law, and persons in whose custody this report comes, should observe, any such restrictions. The revelation of interest statements integrated in this analysis are provided exclusively to improve & enhance the transparency and should not be treated as endorsement of the views expressed in the analysis. The price and value of the investments referred to in this report and the income from them may go down as well as up. Bonanza portfolio Ltd or its directors, employees, affiliates or representatives do not assume any responsibility for, or warrant the accuracy, completeness, adequacy and reliability of such information / opinions / views.

While due care has been taken to ensure that the disclosures and opinions given are fair and reasonable, none of the directors, employees, affiliates or representatives of M/s. Bonanza portfolio Ltd shall be liable. Research report may differ between M/s. Bonanza portfolio Ltd RAs and other companies on account of differences in, personal judgment and difference in time horizons for which recommendations are made. Research entity has not been engaged in market making activity for the subject company. Research analyst has not served as an officer, director or employee of the subject company. Research analyst has not received any compensation/benefits from the Subject Company or third party in connection with the research report.

Bonanza Portfolio Ltd. Bonanza House, Plot No. M-2, Cama Industrial Estate. Walbhat Road, Goregaon (E), Mumbai – 400063  
Web site: <https://www.bonanzaonline.com> SEBI Regn. No.: INZ000212137 BSE CM: INB 011110237 | BSE F&O: INF 011110237 |  
MSEI: INE 260637836 | CDSL: 120 33500 | NSDL: a) IN 301477 | b) IN 301688 (Delhi) PMS: INP 000000985 | AMFI: ARN -0186